

PIONEERS GHOST TRAIL

Start your day off in the neat town of Theodore. It's palm-lined roads are quite spectacular and the town is an impressive look-alike to the street plan of Canberra. Though it is local hear say that Walter Burly Griffin architecturally designed the town, he in fact didn't. More so, Theodore was designed along the lines of other Irrigational towns, especially in NSW.



1. The Boulevard

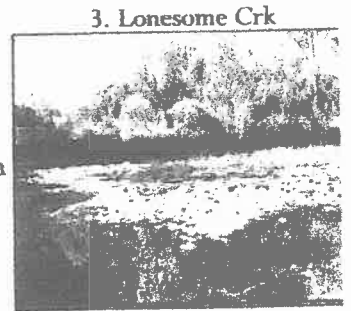
From the Information Centre in town if you drive 1.4 kms to the end of the Palm Trees and turn left onto Leichhardt Highway or A5 and drive a further 1.1km you will come to the Theodore Weir turnoff. Turn left here and drive a further 0.5 k and you will have full view of the weir which is always full of water and is a lovely picnic spot.



Go back along the Leichhardt 1km, on your left you will see Malakoff Road turn off which follows the Malakoff Range. You will cross Lonesome Creek before you wind up the Range, follow this road as there are panoramic views as you go. Especially at the height where scenes of distant Ranges and fertile cotton farms are quite spectacular.

2. Malakoff View

Should you continue on this road, it runs for 12kms, you will turn right onto Nipan Road. Once on this road, you will see you are approaching Lonesome Creek again. Turn to your left just before the bridge and you'll find a space to park your vehicle, to enable you take advantage of photographic opportunities of water lilies that are usually in abundance.



3. Lonesome Crk

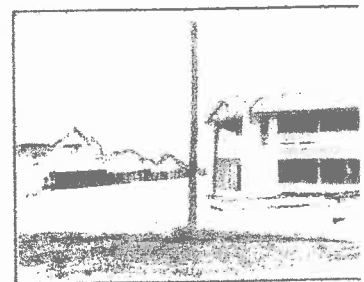
For the afternoon take the short drive to Cracow, now on a sealed road, calling in to Cracow Beach (as the locals call it), 2 kms off the Cracow Road on the Isla/Delusion Road. There is a magnificent stand of palms a little further a long. These are the rare species of Livistona Palm "Carnarvon" tall fan-leaved palms endemic to the Dawson River and its tributaries in the area. This particular stand of palms covers over 300 acres



As you return to Cracow Road, just before the grid, you will notice on your left an old grave site. Cornelia Marion Graham, wife of Archibald, who departed this life on 1st November 1900, aged 27 years, is buried here.

4.

Go back onto the Cracow Road and follow this into the township of Cracow to continue your Pioneer Ghost Trail. You can go out to the old mine, view the deserted hospital and many shops and enjoy the country Hospitality of the hotel with its display of memorabilia .



5. Cracow

The text from this tour has been adapted from the Banana Shire Council Pioneers Ghost Trail and made more up to date with photo's to support more up to date and accurate information.

Photo's 1,3, 4 in this collection belong to R. Connolly

Photo 2 belongs to M. Sauer and it printed with permission.

Photo 5 of Cracow belongs to the Tot Holmes collection and is printed here with permission from Sharyn Holmes